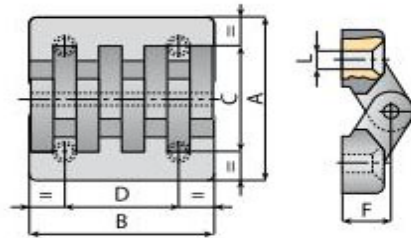


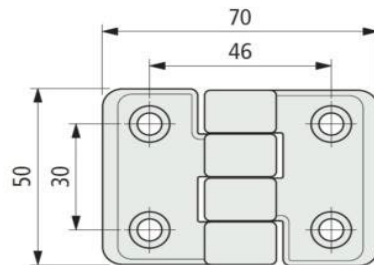
Lamir, handföng og hurðaloka

Löm 65 x 64 mm

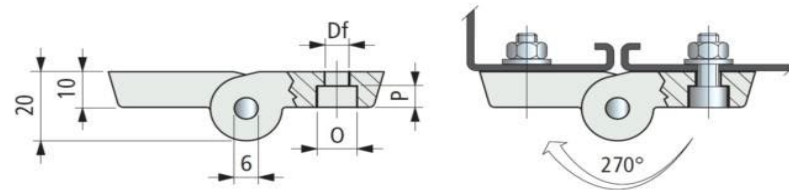


A 64 mm **B** 65 mm **C** 40 mm **D** 40 mm **F** 15 mm **L** 6,5 mm
 Efni nylon og ryðfrír teinn

Löm 70 x 50 mm



DF 6 mm **P** 6 mm **O** 10 mm
 Efni nylon og ryðfrír teinn



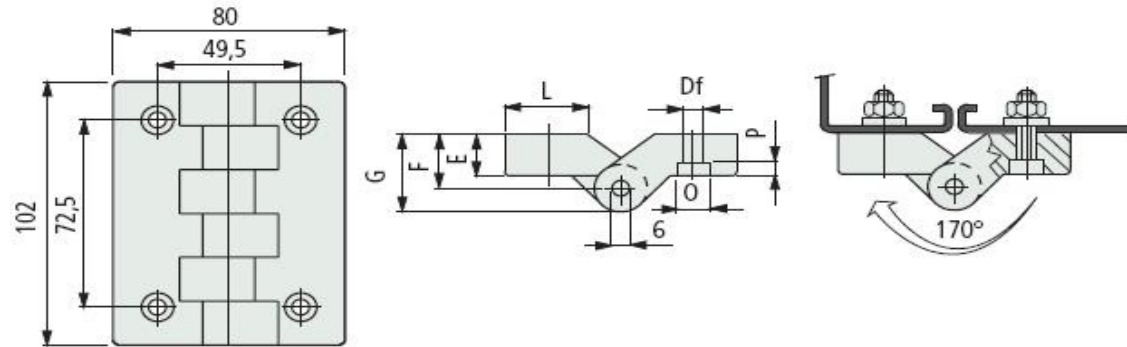
Löm 102 x 80 mm



E	F	G	L	O	P	DF
11,5 mm	14 mm	24 mm	35 mm	10 mm	6,5 mm	6,5 mm

Efni nylon og ryðfrír teinn

■ 170° hinge

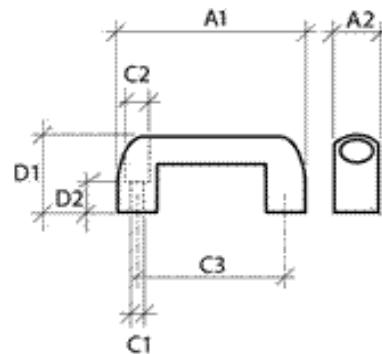


Handföng plast 133 x 24 mm



A1	A2	C1	C2	C3	D1	D2
133	24	8	13	116	40	7

Efni trefjastyrkt nylon



Hurðaloka

